

OCTOBER 2019

THE JOURNAL

From Rockwell Automation and Our PartnerNetwork™

Deliver What They Want

Meet shifting consumer demands by rethinking packaging machine design to maximize throughput, flexibility and uptime.



**UNDERSTAND
YOUR CUSTOMER'S
PACKAGING BUSINESS**

**SIMPLIFY INSTRUMENTATION
PREVENTIVE MAINTENANCE**

**2019 AUTOMATION FAIR
DIRECTORY**

PRRST STD
US POSTAGE
PAID
HARRISBURG PA
PERMIT # 249

>> Linear Rotary Motor

Encompass™ Product Partner **LinMot** introduces the smallest model of its PRO2 linear rotary motor family: the PRO2-38. With a total width of only 38 mm, it is intended for applications with limited space and sensitive assembly processes. In addition to its slim housing, the motors are responsible for the lifting and rotating motion and additional components. This model is functionally similar to its larger counterparts.

In addition to the linear and rotary servo motors, further options can be integrated such as a magnetic spring called MagSpring, a torque sensor and a force sensor. The MagSpring makes sure that the moving load is compensated passively and prevents the axis from dropping in case of power loss.

The torque and force sensors allow for precise, reproducible and recordable capping and assembly processes such as those required in the pharmaceutical or medical industries.

For demanding applications and to increase flexibility, a hollow shaft option for all PRO2 motors is available.



>> Circular Data Access Port

Rockwell Automation Strategic Alliance Partner **Panduit**'s new circular data access port is designed to provide programming port and electrical outlet access to equipment without the risk of exposure to electrical safety hazards. It provides a safe and secure way to maintain and monitor performance of PLCs, VFDs and industrial networks to promote overall safety at the work site, resulting in reduced costs and increased efficiency.

Its circular frame design eases installation of data access ports by using a standard panel punch. This provides cleaner installation and saves on labor versus the traditional drilling and sawing approach. The modular input design accepts RJ45 jacks, circuit breakers, USB and other modular connectors that can be interchanged at any time. This allows maximum design flexibility, adaptable inventory and field upgradeability.

A quarter-turn lock and provisions for lockout/tagout products or a padlock provide safety and security. Mounting screws are covered to prevent tampering or unauthorized removal of access port from the control panel.



>> PRODUCT SPOTLIGHT

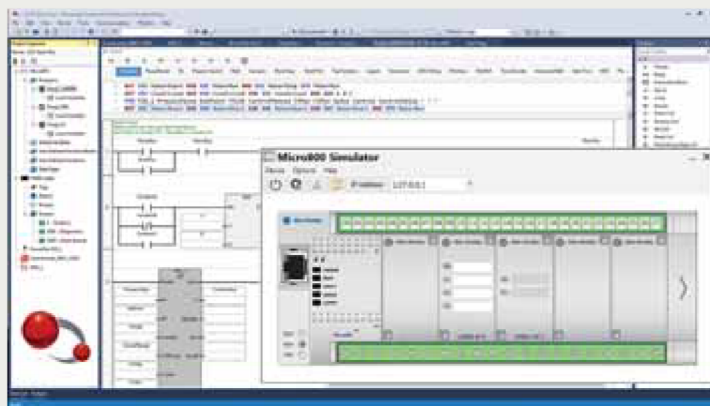
Optimized Control for Packaging Applications

Rockwell Automation offers the **Micro800™ PLCs** for packaging applications that are compact and flexible for customization. Users can choose and add functionality with Micro800 plug-in and expansion I/O modules and enjoy the ease of configuration and programming with one design software.

With the **Connected Components Workbench™** environment, machine builders also can make use of digital engineering to help compress development cycles and accelerate time to market. The Micro800 Simulator allows users to develop, test and produce a robust control system offline without hardware. This helps

simplify design and application code testing and helps reduce overall hardware costs.

To enhance this controller platform further, Encompass™ Product Partner **Spectrum Controls Inc.** offers a variety of high-performance specialty plug-in and expansion I/O modules. Coupled with the release of Micro800 firmware revision 12, the 2080-SDMEMRTC-SC memory module with real-time clock support provides recipe management designed to improve productivity of packaging machines. This module streamlines the ability for datalog, recipe storage, backup and restore of memory or configuration via a microSD™ card.



ADVERTISERS INDEX

Advanced Micro Controls, Inc. (AMCI)	19, 51
Ametek	20
Aparian	21, 51
Apex Dynamics Inc.	6
Burkert Fluid Control Systems	52
Control Station, Inc.	52
Dialight	59
Endress + Hauser, Inc.	3
Hammond Power Solutions	41
Hardy Process Solutions	51
Helm Instrument Co. Inc.	38
HMS Networks Inc.	22, 51
Hubbell	36
Imperx, Inc.	35
Littelfuse Inc.	11
MTS Systems Corp., Sensors Division	34
POSITAL FRABA Inc.	41
RACO Manufacturing & Engineering Co.	52
Rockwell Automation Automation Fair Event	23
Rockwell Automation Remote Monitoring	56
Rockwell Automation Software	37
Rockwell Automation Solution Partner Program	13
SeQent	51
Service Wire	39
SMC Corp.	46
Southwire	60
Spectrum Controls, Inc.	2
Stratus Technologies	29, 51
Sytech Inc.	52
Teledyne DALSA	14, 15

>> Pocket Thermal Imager

The PTi120 Pocket Thermal Imager from Encompass™ Product Partner **Fluke Corp.** offers a pocket-sized thermal camera that withstands dirt and moisture. The ability to survive a 1-m drop is designed to offer industrial technicians a durable solution for quick temperature scans of electrical equipment, pumps, motors, building systems, HVAC and process control equipment for hot spots and cold spots that can indicate early signs of trouble.

The pocket-size imager also features Fluke Connect Asset Tagging and IR-Fusion technology. Fluke Connect Asset Tagging helps eliminate the sorting and organizing of infrared images by simply scanning the asset's QR code or barcode. The touchscreen display offers IR-Fusion, which blends a visible light image with an infrared image simply by sliding your finger across the screen.



>> Linear Motors

Encompass™ Product Partner **LinMot** has launched a larger model P01-48 in the HP "high-performance" range. As with the smaller -23 and -37 sizes, changes to the motor winding, the magnetic circuit and the use of high-performance materials result in higher-performance motor capability.

The model has the same dimensions as the standard P01-48 series linear motors, but delivers more power. This allows an increase in the performance of existing machines and systems without having to revise the mechanical design. Older machines can be upgraded on site.

These linear motors can be used to realize highly dynamic applications in a small space, in many cases without the previously required forced cooling.



THE JOURNAL



You're just 1 click away from getting free online articles from *The Journal*. Just go to http://bit.ly/ROK_tjsubscribe. Check "The Journal" box to get your free e-newsletter that brings you the digital edition of *The Journal* every issue – plus additional Web-exclusive how-to articles, case studies and product news from Rockwell Automation and its Encompass™ Product Partners and Solution Providers. Visit [HTTP://BIT.LY/ROK_TJSUBSCRIBE](http://bit.ly/ROK_tjsubscribe)

SIGN UP TODAY!