

Install Linmot-Talk R1.3.16 in XP Mode

How to install and run LinMot-Talk using the XP mode of Windows 7

Version: 0.2 (eng) fj, 07/17/2012

© 2012 NTI AG

This work is protected by copyright.

Under the copyright laws, this publication may not be reproduced or transmitted in any form, electronic or mechanical, including photocopying, recording, microfilm, storing in an information retrieval system, not even for didactical use, or translating, in whole or in part, without the prior written consent of NTI AG.

LinMot® is a registered trademark of NTI AG.

Note

The information in this documentation reflects the stage of development at the time of press and is therefore without obligation.

NTI AG reserves itself the right to make changes at any time and without notice to reflect further technical advance or product improvement.

NTI AG
LinMot®
Haerdlistrasse 15
CH-8957 Spreitenbach

Tel.: +41 (0)56 419 91 91
Fax: +41 (0)56 419 91 92
Email: office@LinMot.com
Homepage: www.LinMot.com

Table Of Contents

Table Of Contents.....	3
Required Documentation And Files.....	3
LinMot Software Compatibility.....	4
Install LinMot-Talk in XP mode.....	4
<i>Install XP Mode for Windows 7</i>	4
<i>Start XP Mode</i>	4
<i>Install LinMot-Talk</i>	4
<i>Set COM port settings in the virtual machine</i>	5
Seamless Mode (Not recommended).....	6
Contact	7

Required Documentation And Files

Download and instructions for XP mode on Windows 7
<http://www.microsoft.com/windows/virtual-pc/download.aspx>

LinMot-Talk software
<http://www.linmot.com/index.php?id=82>

LinMot Software Compatibility

Software / OS	Windows XP / Vista (32Bit)	Windows 7 (64Bit)	Windows 7 (32Bit)	Windows XP / Vista (64Bit)
LinMot-Talk 5	yes	yes	yes	yes*
LinMot-Talk R1.3.16	yes	In XP Mode for Windows 7 (Professional, Ultimate, Enterprise)	yes*	no
MPC Configurator	yes	yes	yes*	yes*
LinMot Designer	yes	yes	yes*	yes*
LinMot Commander	yes	yes	yes*	yes*

* Not tested but should work

Install LinMot-Talk in XP mode

Install XP Mode for Windows 7

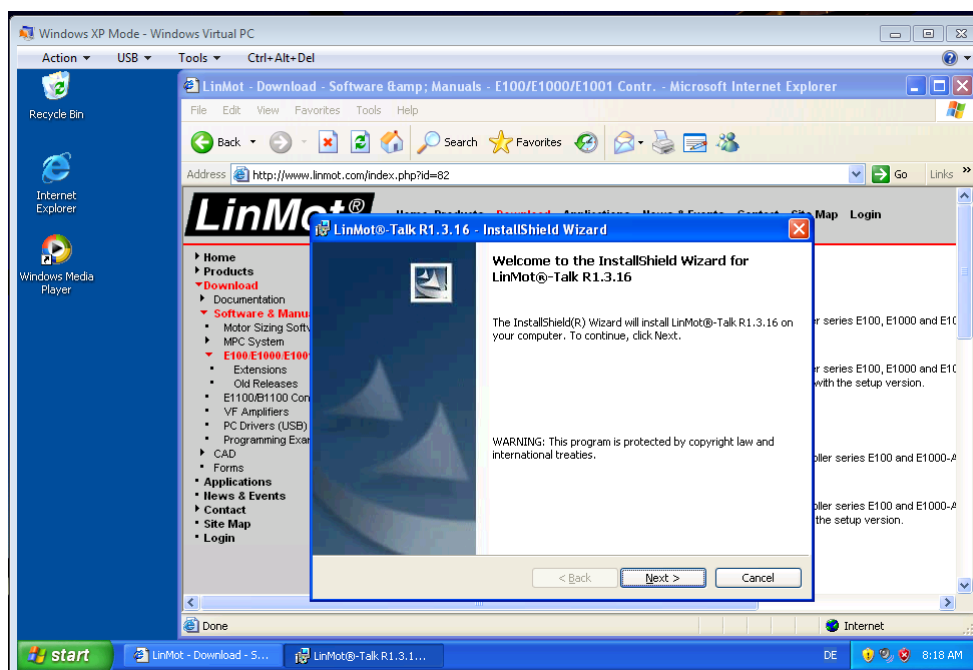
Go to <http://www.microsoft.com/windows/virtual-pc/download.aspx> and follow the instructions of Microsoft to install "Windows XP Mode" and "Windows Virtual PC". Be aware that you need Windows 7 Professional or higher to use XP Mode.

Start XP Mode

Go to „Start -> All Programs -> Windows Virtual PC -> Windows XP Mode“ to start the virtual machine.

Install LinMot-Talk R1.3.16

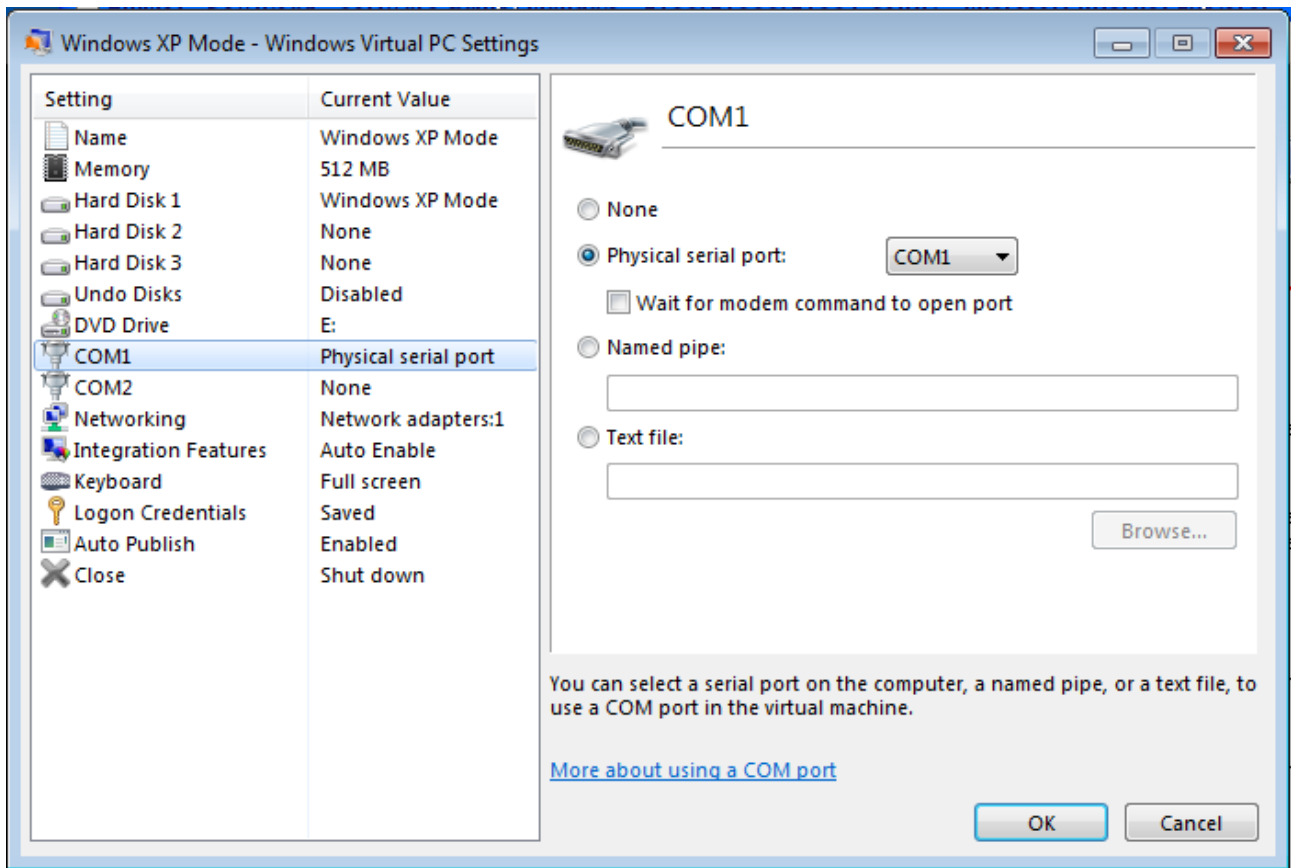
Install LinMot-Talk R1.3.16 as usual in the virtual machine.



Install Linmot-Talk in XP Mode

Set COM port settings in the virtual machine

Under „Tools -> Settings“ configure the COM port as shown below:



Now you are ready to use LinMot-Talk

Seamless Mode (Not Recommended)

To start LinMot-Talk directly from the Windows 7 start menu you have to copy the LinMot-Talk shortcut to "C:\Documents and Settings\All users\Start menu\" **in the virtual machine**.

The shortcut will then be shown in the Windows 7 start menu under:
"Start -> All programs -> Windows Virtual PC -> Windows XP Mode Applications"

This method is not recommended as LinMot-Talk needs two components to be loaded. In seamless mode the first start of LinMot-Talk will lead to an error. You can acknowledge this error and start it again.

Contact

SWITZERLAND

NTI AG
Haerdistr. 15
CH-8957 Spreitenbach

Sales and Administration: +41-(0)56-419 91 91
office@linmot.com

Tech. Support: +41-(0)56-544 71 00
support@linmot.com

Tech. Support (Skype) : <skype:support.linmot>

Fax: +41-(0)56-419 91 92
Web: <http://www.linmot.com/>

USA

LinMot, Inc.
5750 Townline Road
Elkhorn, WI 53121

Sales and Administration: 877-546-3270
262-743-2555

Tech. Support: 877-804-0718
262-743-1284

Fax: 800-463-8708
262-723-6688

E-Mail: us-sales@linmot.com
Web: <http://www.linmot-usa.com/>

Please visit <http://www.linmot.com/> to find the distribution near you.

Smart solutions are...

