

## Drive-Configuration-Over-Fieldbus-SG5-SG7

---

Manual



### LinMot Drive Configuration over Fieldbus Interfaces SG5-SG7

**This document applies to the following drives series:  
A1100 / C1100 / C1200 / C1400 / E1200 / E1400**

© 2020 NTI AG

This work is protected by copyright.

Under the copyright laws, this publication may not be reproduced or transmitted in any form, electronic or mechanical, including photocopying, recording, microfilm, storing in an information retrieval system, not even for didactical use, or translating, in whole or in part, without the prior written consent of NTI AG.

LinMot® is a registered trademark of NTI AG.

#### Note

The information in this documentation reflects the stage of development at the time of press and is therefore without obligation. NTI AG reserves itself the right to make changes at any time and without notice to reflect further technical advance or product improvement.

NTI AG  
LinMot  
Bodenaeckerstrasse 2  
CH-8957 Spreitenbach

Tel.: +41 56 419 91 91  
Fax.: +41 56 419 91 92  
Email: [office@LinMot.com](mailto:office@LinMot.com)  
Homepage: [www.LinMot.com](http://www.LinMot.com)

## Table of Contents

<b>1 Introduction .....</b>	<b>5</b>
1.1 System Generation (SG) .....	6
<b>2 Firmware Parameters .....</b>	<b>6</b>
2.1 Overview .....	6
2.2 Unique Parameter ID and Raw Data Value .....	7
2.3 ROM and RAM Value .....	8
2.4 Limited ROM and Flash Write Access .....	9
2.5 Default Value .....	10
2.6 32 Bit Access for any Parameter Type .....	10
<b>3 Firmware Layer Concept .....</b>	<b>11</b>
<b>4 Parameter Configuration Compatibility Rules .....</b>	<b>13</b>
<b>5 Curves .....</b>	<b>14</b>
5.1 Curve Object .....	14
5.2 Curve Info Block .....	15
5.2.1 Data Offset .....	15
5.2.2 Object Type .....	15
5.2.3 Number of Setpoints .....	16
5.2.4 Data Type Size .....	16
5.2.5 Name .....	16
5.2.6 Curve ID .....	16
5.2.7 X-Length .....	16
5.2.8 X/Y-Dimension UUID .....	17
5.2.9 Wizard Information .....	17
5.3 Curve Data Block .....	17
5.4 Erasing all curves from the Drive's RAM .....	17
5.5 Uploading Curves from the Drive .....	18
5.6 Downloading Curves into the Drive's RAM .....	19
<b>6 Command Table .....</b>	<b>20</b>
6.1 Command Table Entry Format .....	20
<b>7 Real Time IO Configuration Module .....</b>	<b>22</b>
7.1 Configuration Module Control .....	22
7.1.1 Command Count .....	22
7.1.2 Parameter Command ID .....	22
7.2 Configuration Module Status .....	24
7.2.1 Overview Configuration Module Return Status Values .....	24
7.2.1.1 Overview Parameter access .....	25
7.2.1.2 Overview Curve access .....	25
7.2.1.3 Start getting UPID List .....	25
7.2.1.4 Get next UPID List item .....	25
7.2.1.5 Start getting Modified UPID List (Command ID 22h) .....	26
7.2.1.6 Get Next Modified UPID List Item (Command ID 23h) .....	26
7.2.1.7 Get Error Log Entry Counter (Command ID 70h) .....	26
7.2.1.8 Get Error Log Entry Error Code (Command ID 71h) .....	26
7.2.1.9 Get Error Log Entry Time Low (Command ID 72h) .....	26
7.2.1.10 Get Error Log Entry Time High (Command ID 73h) .....	26
7.2.1.11 Get Error Code Text Stringlet (Command ID 74h) .....	27
7.2.1.12 Command Table: Save To Flash (Command ID 80h) .....	27

7.2.1.13 Command Table: Delete All Entries (RAM) (Command ID 81h) .....	27
7.2.1.14 Command Table: Delete Entry (Command ID 82h) .....	27
7.2.1.15 Command Table: Write Entry (Command ID 83h) .....	27
7.2.1.16 Command Table: Write Entry Data (Command ID 84h) .....	28
7.2.1.17 Command Table: Get Entry (Command ID 85h) .....	28
7.2.1.18 Command Table: Get Entry Data (Command ID 86h) .....	28
7.2.1.19 Command Table: Get Entry List (0..7) (Command IDs 87h .. 8Eh) .....	28
<b>8 PVL Data Format .....</b>	<b>29</b>

## 1 Introduction

Users of LinMot drives can easily setup their drive by using the LinMot-Talk software. Beside other functionality (firmware download, monitoring, PLC emulation, etc.), the LinMot-Talk software is used for altering the firmware configuration parameters, for creating and up- and downloading of curve profiles.

Most of the LinMot drives are equipped with a fieldbus interface to the superior control system (PLC, IPC). This interface is used for controlling the drive under normal operation conditions (read/write of control and status word, sending motion commands, etc.).

If the LinMot drive uses a fieldbus connection for the communication to the superior control system (PLC, IPC), then the same fieldbus interface can be used for configuration purposes via PLC as well. The following fieldbus interfaces are supported: PROFINET, EtherCAT, sercos, POWERLINK, EtherNet/IP, Profibus DP, CANOpen, DeviceNet, RS232 and RS485 (using LinRS protocol).

This document describes in general the access to the configuration parameters and the curve data over fieldbus interfaces. Detailed information about how data access is implemented in the respective interfaces can be found in the corresponding interface user manuals.

**NOTE:** The drive series A1100, C1100, C1200, C1400, E1200 and E1400 differ in some functions from each other. If nothing is indicated, the behavior is the same.

## 1.1 System Generation (SG)

The LinMot drive families are based on different hardware platforms, which are called system generations. The abbreviation is “SG”. Whereas differences of hardware or software functionality exist between the system generations, the documentation is marked with the “SG” term. The following table gives an overview of which drive family belongs to which SG:

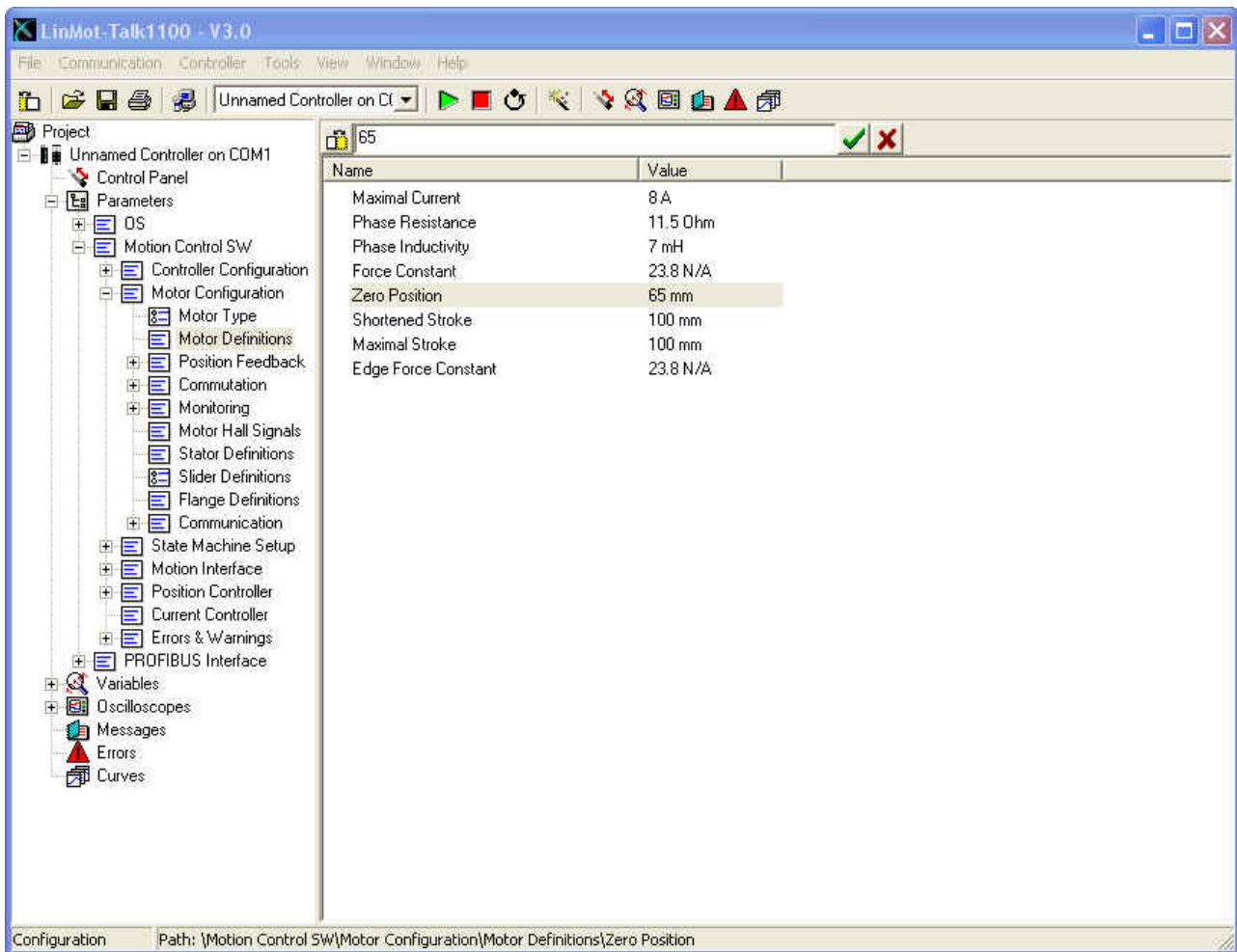
<b>SG</b>	<b>Drives</b>
SG1	Families E400, E4000 V1 (not supported by LinMot-Talk 6)
SG2	Families E400, E4000 V2 (not supported by LinMot-Talk 6)
SG3	Family E1100 (GP, CO, DN, DP) (LC/HC/XC)
SG4	Family B1100 (VF, PP, GP, ML) (LC/HC/XC)
SG5	Family E1200 (GP, DP, DS, EC, IP, LU, PD, PL, PN, SC, SE) Family E1400 (GP, DP, DS, EC, IP, LU, PD, PL, PN, SC, SE) (0S/1S) Family B8000-ML (GP, EC, IP, PL, PN, SC)
SG6	Family C1250 (CM, DS, EC, IP, LU, PD, PL, PN, SC, SE) (0S/1S) Family C1450 (DS, EC, IP, LU, PD, PL, PN, SC, SE) Family E1400V2 (GP, DP, DS, EC, IP, PD, PL, PN, SC, SE) (0S/1S)
SG7	Family A1100 Family C1100 (GP, DS, EC, PD, PN, SE) (0S/1S)

## 2 Firmware Parameters

### 2.1 Overview

The LinMot drive firmware has to be configured through its parameters in order to meet the needs of the application where the servo system has to be integrated. Typical examples of firmware parameters that must be set during the commissioning process are motor definition parameters, position control parameters, etc.

The easiest way to alter parameters is to use the LinMot-Talk software tool. The software displays the parameters in a comfortable tree structure. Most of the parameters are displayed as a scaled value with the corresponding physical unit.



**Figure 1: Firmware parameters listed in a tree structure**

## 2.2 Unique Parameter ID and Raw Data Value

The value of any parameter is stored as an integer value (raw data) in the memory space of the drive. The parameter is identified through its Unique Parameter ID (UPID), which is a 16 Bit integer number.

Both, UPID and raw data value of any parameter can be displayed in the LinMot- Talk parameter tree structure (press Show/Hide Details button).

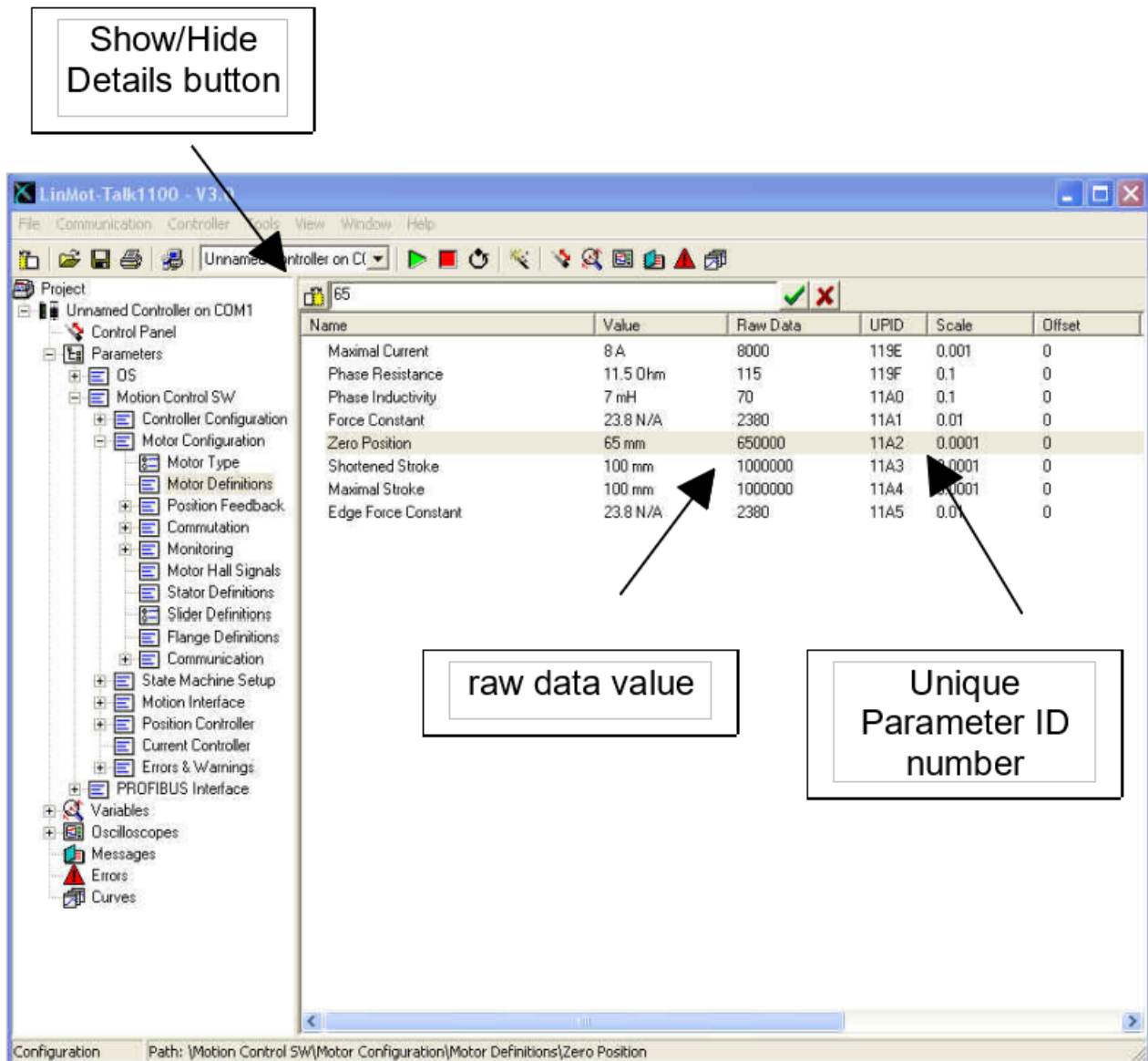


Figure 2: Detailed view for parameters

### 2.3 ROM and RAM Value

The value of any parameter is stored in the non-volatile memory area of the LinMot drive (ROM value). During the boot-up process the drive's operating system creates a copy of the non-volatile memory block to its RAM memory space. Thus, after the drive has powered up, each parameter has two memory locations and values: one in the ROM, the other in the RAM.

The firmware uses at run time exclusively the RAM values of the parameters in its control tasks (fast data access). The drive's operating system and the fieldbus interfaces provide independent access to ROM and RAM values.

When parameters are altered using the LinMot-Talk software, the ROM and/or the RAM value are affected:

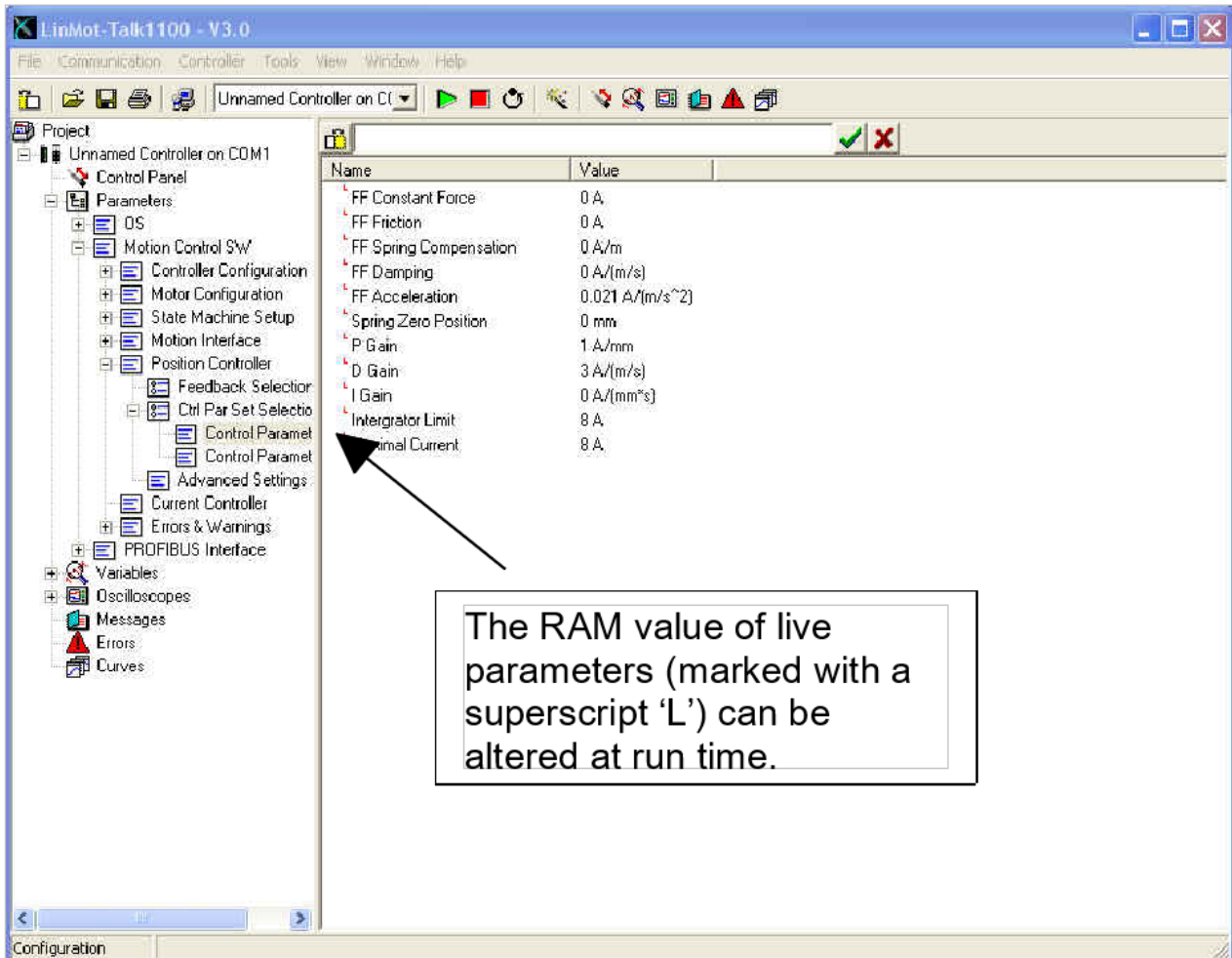
- When 'live' parameters are changed, then the LinMot-Talk4 software writes to ROM and RAM memory.
- 'Non-Live' parameters are written only to ROM (and are copied to RAM at next firmware start).

The LinMot-Talk software reads and displays the ROM values. It reads the parameter values only once (during the login process). The PC software allows altering 'non-live' parameters only if the firmware is stopped.



Over the fieldbus interface the RAM value of 'non-live' parameters cannot be changed. Changing the ROM value is possible even when the firmware is running (except for read-only parameters).

Changing the RAM value of a parameter immediately influences the system behavior when the firmware is running (e.g. control parameters of the position control loop).



**Figure 3: Live Parameters marked with a superscript 'L'**

Changes to ROM values don't affect the system behavior until the next firmware startup (e.g. after a software reset initiated by the superior control system or stop/start from the LinMot-Talk software).

## 2.4 Limited ROM and Flash Write Access

**WARNING:** Note that Flash and ROM memories have limited write cycles. Do not repeatedly write to these devices. The guaranteed endurance is:

- Parameter ROM write: 1'000'000 write cycles for each parameter
- Power Cycles and Reboot (cumulation of both): 1'000'000 cycles
- Curve and CT write cycles (each counts separately):
  - SG 5-7: 1'000 with data retention of 20 years (15'000 with 5 years)
  - SG 4: 1'000 with data retention of 15 years (20'000 with 5 years)
  - SG 3: 1'000'000
- Firmware Installation:

SG 5-7: 500 with data retention of 20 years (7'500 with 5 years)  
 SG 4: 500 with data retention of 15 years (10'000 with 5 years)  
 SG 3: 500'000

## 2.5 Default Value

Beside the actual RAM and ROM value each parameter has its default value. The default value is displayed in the detailed parameter view of the LinMot-Talk software.

During firmware installation the ROM values are set to the default values of the corresponding parameters.

E1200 and E1400 drives provide resetting the parameters to their default values over fieldbus interfaces. Resetting to default value is possible for single parameters (via UPID) or for all parameters of any firmware layer at once (see below).

## 2.6 32 Bit Access for any Parameter Type

The whole configuration consists of parameters of different types (bit, byte, 16bit integer, 32bit integer and string parameters). In order to keep the interface as simple as possible any parameter can be accessed as a 32bit integer value. The drive's operating system will filter out the relevant number of bits for each parameter.

Since string parameters can be longer than 4 characters (= 4 Bytes), a single 32bit integer value is not sufficient to define a general string. Therefore strings are handled in a special way:

- In the LinMot-Talk software to each string parameter one single UPID is shown.
- Internally the string is split into parts (so called 'stringlets') of 4 characters (= 4 bytes = 32 bits).
- Each stringlet has its own UPID.
- The UPID of the first stringlet is the string UPID plus 1, the UPID of the second stringlet is the string UPID plus 2 and so on.

The following example shows the principle of converting strings to raw data values.

Example:

Writing the string 'X-Axis Left' to the parameter 'User Comment':

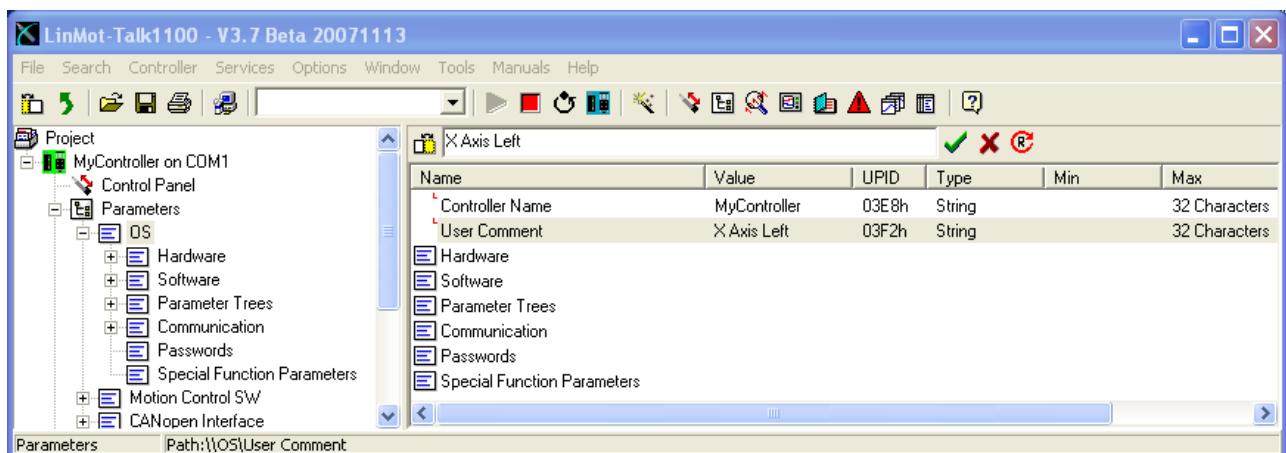


Figure 4: String parameter example for E1200 (see UPID 03F2h)

The following table shows how the stringlet UPIDs and the corresponding 32bit integer values are determined:

Stringlet	"X Ax"	"is L"	"eft"
Parameter UPID	03F3h	03F4h	03F5h
Ordinal 1st Char:	Ord('X')=58h	Ord('i')=69h	Ord('e')=65h
Ordinal 2nd Char:	Ord(' ') =20h	Ord('s')=73h	Ord('f')=66h

Stringlet	"X Ax"	"is L"	"eft"
Ordinal 3rd Char:	Ord('A')=41h	Ord(' ') =20h	Ord('t')=74h
Ordinal 4th Char:	Ord('x')=78h	Ord('L')=4Ch	00h
Parameter Value:	78412058h	4C207369h	00746665h

**Table 1: String access over stringlets**

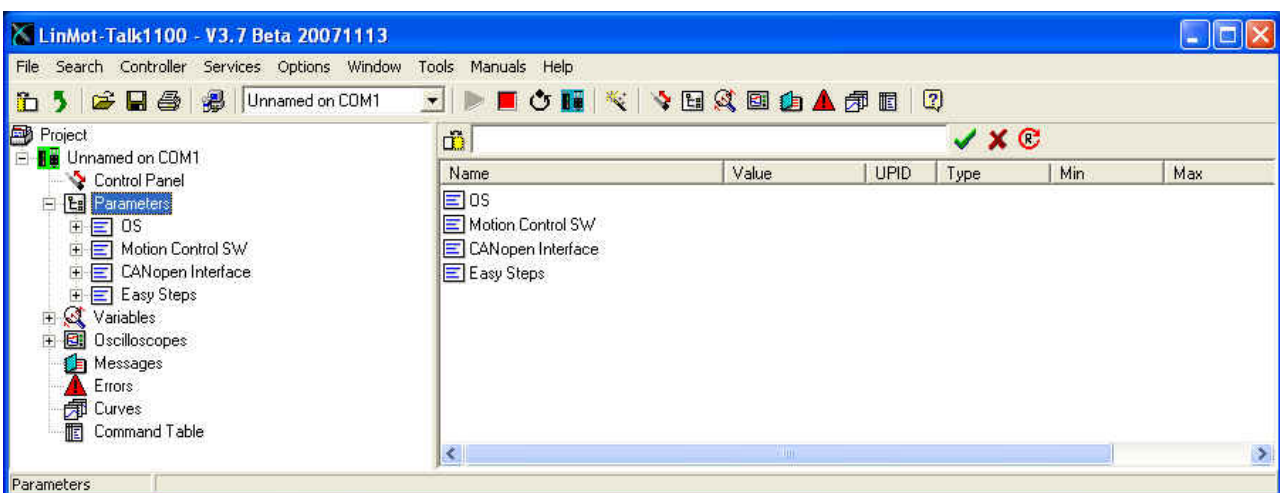
### 3 Firmware Layer Concept

The firmware on the drive consists of up to four layers:

Layer	Name	Layer Functionality
1	Operating System	<ul style="list-style-type: none"> <li>• Resource Management</li> <li>• Communication with LinMot-Talk</li> <li>• Start/Stop of the other SW layers</li> <li>• Parameter / Variable Service</li> <li>• Oscilloscope Service</li> <li>• Message / Error Service</li> </ul>
2	Motion Control Software	<ul style="list-style-type: none"> <li>• Current Control Loop</li> <li>• Position Control Loop</li> <li>• Set Value Generation</li> <li>• Monitoring</li> </ul>
3	Interface Software	<ul style="list-style-type: none"> <li>• Communication to superior control system (e.g. via PROFINET; EtherNet/IP, Profibus, CANOpen, DeviceNet, LinRS, etc.)</li> </ul>
4	Application	<ul style="list-style-type: none"> <li>• Customized firmware extensions</li> </ul>

**Table 2: The four firmware layers**

Each firmware part has its own parameters located in a separate branch of the parameter tree.

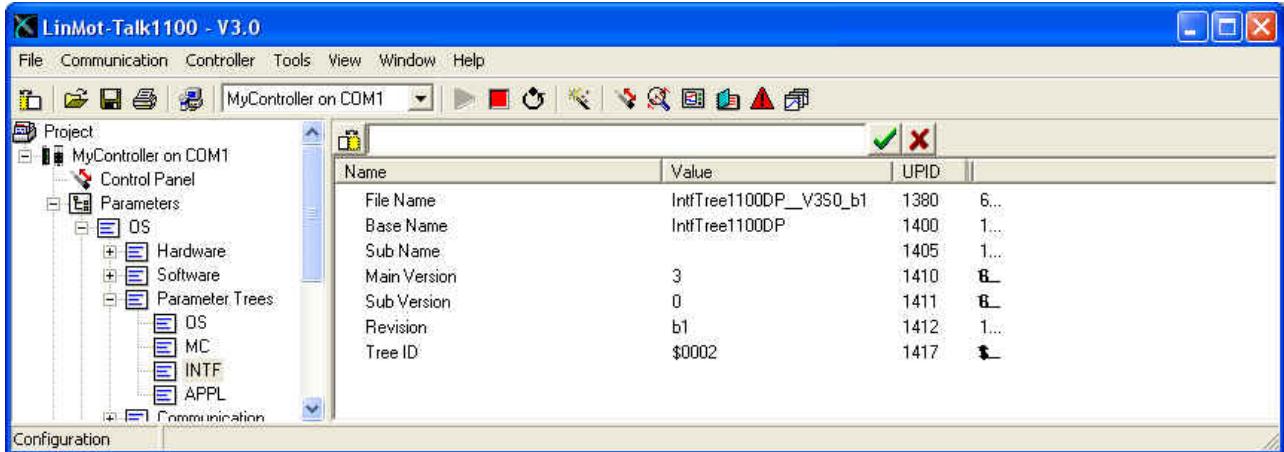

**Figure 5: Parameter tree with branches for the different firmware layers**

On SG5 drives, each firmware layer has its own range of UPIDs for its parameters and variables.

Layer	Name	UPID Range
1	Operating System	0000h...0EFFh
2	Motion Control SW	1000h...1EFFh
3	Interface Software	2000h...2EFFh
4	Application	3000h...3EFFh

**Table : UPID value ranges for SG5 drives.**

The parameter definitions are stored in the drive. On SG5 drives the UPID, RAM/ROM locations, default values, parameter type, min/max values and access rights are stored. The corresponding definition files have been downloaded together with the firmware when the firmware was installed on the drive. Information about the currently installed parameter tree files can be found in the operating system parameter tree branch.



**Figure 6: Parameter tree information**

The parameter subtree (e.g. Profibus parameter tree V3.0 etc.) is defined through its Tree ID, Main Version and Subversion value. This information can be captured by reading out the values of the parameters with UPID according to the following table. These parameters are used to perform compatibility tests before parameter configurations are downloaded to drives (see below).

Layer	Tree ID UPID	Main Version UPID	Sub Version UPID
1 OS	0539h	0532h	0533h
2 MC SW	0561h	055Ah	055Bh
3 Interface SW	0589h	0582h	0583h
4 Application	05B1h	05AAh	05ABh

**Table 4: UPID value of tree identification of the different SW layers**

## 4 Parameter Configuration Compatibility Rules

The current parameter configuration can be stored into a PVL file. This text file contains the parameter UPID and value in an easy to interpret list. This parameter list can easily be stored in a superior machine controller (PLC, IPC) and downloaded to any drive of the same type if necessary.

Besides the parameters raw data the PVL file contains additional information about the system on which the PVL file was created.

Before complete parameter configurations are downloaded from the superior machine control system to the LinMot drive, it is recommended to perform some compatibility checks. With these checks it can be ensured, that the configuration stored in the superior control system (source file) is fully compatible with the firmware installed drive (target system).

The following rules must be considered for each firmware layer:

Check Value	Rule
Tree ID	Tree ID of the source file and target system must be the same (e.g. it is not possible to download a DeviceNet setup onto a drive with Profibus interface firmware installed).
Tree Main Version	The source file parameter tree must have the same Main Version as the tree installed on the target system.
Tree Sub Version	The Sub Version of the source must be the same or smaller than the corresponding value of the target system (backward compatibility within main version).

**Table 5: Compatibility Rules for SG5 drives**

## 5 Curves

The drives can store up to 100 curves, which can be generated and downloaded by the LinMot-Talk Software. The curves are identified by their ID (1..100).

**Exception A1100/C1100:** Only 50 curves can be stored (ID 1..50).

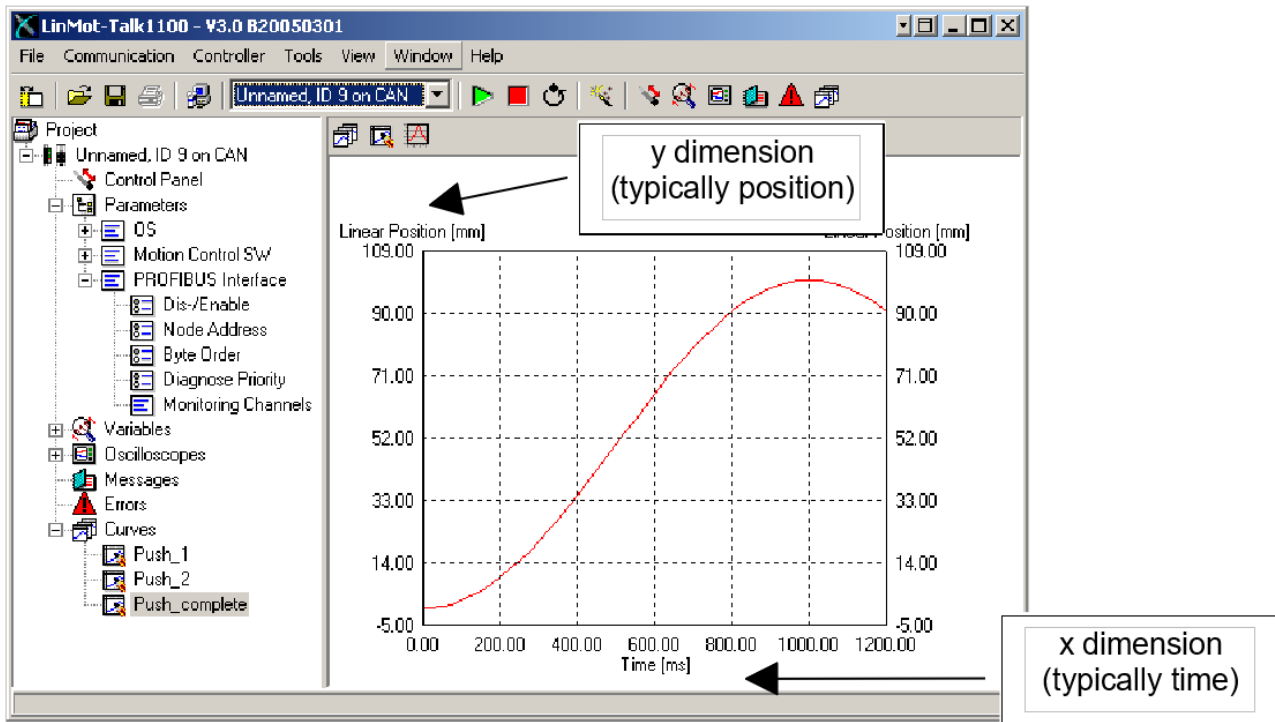


Figure 7: Curves within LinMot-Talk

The curves, which can be accessed by the motion control firmware through corresponding motion commands, are located in the RAM memory space of the drive. They can be permanently stored into a flash memory block as well. At boot time the operating system copies the curve data from the flash memory to the RAM memory block.

The curve profiles, which are generated and downloaded using the LinMot-Talk software, are always stored to RAM and flash memory (permanently saved).

It is also possible to download curves to the drive over the fieldbus. Then it is necessary to have the curve objects stored in the superior machine drive. There are three ways to bring the profiles there:

1. The curves are created and downloaded to a drive with LinMot-Talk. Then the curve objects can be uploaded from the drive over the fieldbus interface (using the curve service).
2. The curves are created and then exported to a raw data file (PVL file) using the LinMot-Talk software. Then the PVL file can be loaded to the main drive.
3. The curve object is fully generated by the main machine controller without using the LinMot-Talk curve tool.

### 5.1 Curve Object

Each curve object consists of a curve info block (header) and a curve data block (setpoints). The curve service provides commands for reading/writing these blocks. For further details how the curve service is implemented in the various fieldbus interfaces please consult the corresponding interface manuals.

Curve Info Block		
Byte Off	Type	Name

Curve Info Block		
0..1	UInt16	Data offset
2..3	UInt16	Object type
4..5	UInt16	Number of setpoints
6..7	UInt16	Data Type size
8..29	String	Name
30..31	UInt16	Curve ID
32..35	UInt32	x-Length
36..37	UInt16	XDimUUID
38..39	UInt16	YDimUUID
40..41	UInt16	Wizard Type
42..45	UInt32	Wizard Par 1
46..49	UInt32	Wizard Par 2
50..53	UInt32	Wizard Par 3
54..57	UInt32	Wizard Par 4
58..61	UInt32	Wizard Par 5
62..65	UInt32	Wizard Par 6
66..69	UInt32	Wizard Par 7
Curve Data Block		
0..xxx	Curve Setpoints	

Table : Curve Object: Info Block and Data Block

## 5.2 Curve Info Block

### 5.2.1 Data Offset

The Data Offset contains the info block size information. The software expects the info block to consist of 70 bytes. So the first word of the info block must have the value 70 (= 46h).

### 5.2.2 Object Type

The Object Type word consists of four nibbles (1 nibble = 4 bits):

- lowest nibble: Object Version (must be 3)
- lower middle nibble: Type of Object (Curve = 0h)
- higher middle nibble: X dimension Code
- highest nibble: Y dimension Code

Curve Info Block: Object Type									
Byte	Name	Bit 7	Bit 6	Bit 5	Bit 4	Bit 3	Bit 2	Bit 1	Bit 0
0	Type & Version	Type of Object: 0h (=Curve)				Version: 3h (=SW-Version 3.x)			
1	X & Y dimension codes	Y dimension code: 0: Position 1: Velocity 2: Current 3: Encoder Pos (Increments) 4: Encoder Speed				X dimension code: 0: Time 1: Encoder Pos (Increments) 2: Position			

Curve Info Block: Object Type									
Byte	Name	Bit 7	Bit 6	Bit 5	Bit 4	Bit 3	Bit 2	Bit 1	Bit 0
		5: MicroSteps							

**Table 7 Curve Info Block: Object Type**

According to the definitions above the Object Type has the following value:

- Position vs. Time curve: 0003h
- Cam profiles (Pos vs. Enc. Pos.): 0103h

Other object types are not supported yet.

### 5.2.3 Number of Setpoints

The number of setpoints of the profile is given as 16bit value. The minimal number of setpoints is 2.

### 5.2.4 Data Type Size

This value defines the size of one setpoint. Position values are defined in 32bit format (32bit = 4 bytes).

### 5.2.5 Name

In order to make identification easier, a descriptive name can be defined (e.g. 'Fast Move Out' or 'Retraction'). 22 bytes are reserved for the name string. The string is terminated with 00h.

If the profile is machine generated (PLC-Program, etc.), the name space will be typically filled with 00h.

### 5.2.6 Curve ID

The Curve ID must be unique. Allowed values are : 1..100 (0001h..0064h) (or 1..50 (0001h..0032h) **on A1100/C1100 drives**)

### 5.2.7 X-Length

The X-Length defines the base length of the curve profile.

- Position vs. Time Curve : Time [10us]
- Cam profiles (Pos vs. Enc. Pos.) : Encoder Pos [Increments]



### 5.2.8 X/Y-Dimension UUID

The following Unique Unit IDs (UUIDs) are supported:

Unit Definition		
UUID	Unit Scaling	Description
0005h	0.1 $\mu\text{m}$ ( $=1 \cdot 10^{-7}\text{m}$ )	Standard Linear Position Unit
001Ah	0.01 ms ( $=1 \cdot 10^{-5}\text{s}$ )	Standard Curve Time Unit
001Bh	1 Increment	Standard Encoder Position Unit

**Table : Unit Definitions**

According to the table above the following values are correct:

Position vs. Time Curves : XDimUUID = 001Ah  
YDimUUID = 0005h

Cam Profiles : XDimUUID = 001Bh  
YDimUUID = 0005h

### 5.2.9 Wizard Information

The wizard information (wizard type & wizard parameters) is used only by the LinMot-Talk software. All those bytes should be set to 0x00 for curves which are not generated with the LinMot-Talk curve tool.

## 5.3 Curve Data Block

The curve data block contains the setpoints (Y-dimension). The size of the block is: No Of Setpoints \* Data Type Size

The setpoints are equally spaced over the x-length. The x-dimension equidistance is: x-Length / (No Of Setpoints – 1).

## 5.4 Erasing all curves from the Drive's RAM

All curves in the RAM of the drive can be deleted by the following command:

- Curve Service: Delete all Curves (RAM)

## 5.5 Uploading Curves from the Drive

To read a curve from the drive using the fieldbus interface, the following commands have to be used:

- Curve Service: Get Curve
- Curve Service: Get Curve Info Block
- Curve Service: Get Curve Data

The curve service commands are described in the corresponding interface manuals.

Reading a curve is according the following scheme:

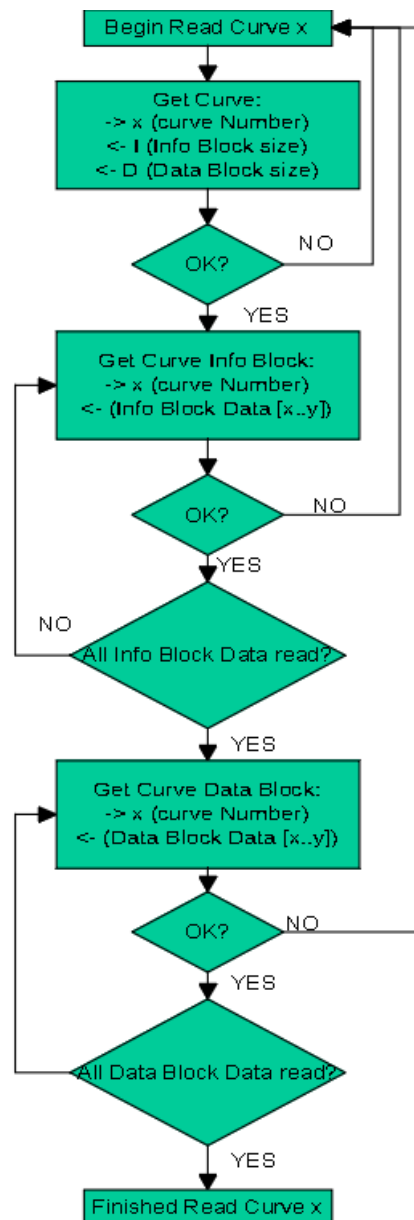


Figure 8: Flowchart Read Curve

## 5.6 Downloading Curves into the Drive's RAM

To write a curve into the RAM of the drive, the following commands have to be used:

- Curve Service: Add Curve
- Curve Service: Add Curve Info Block
- Curve Service: Add Curve Data

The writing of a curve is always according to the following scheme:

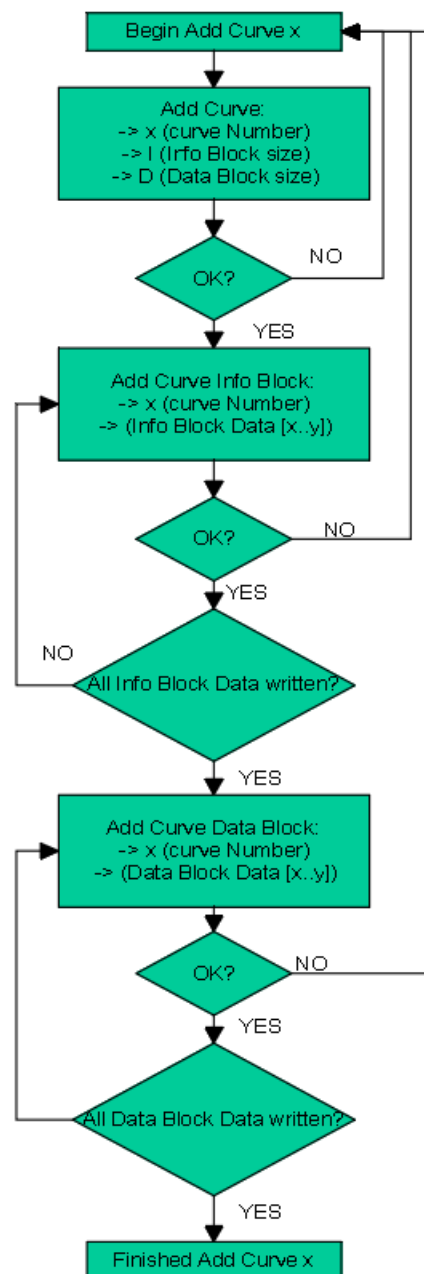


Figure 9: Flow chart Add Curve

## 6 Command Table

For programming simple sequences with decisions the LinMot drive supports the command table (CT) programming utility. Up to 255 CT entries can be programmed. The entries can be arranged in sequences and some branch possibilities are supported.

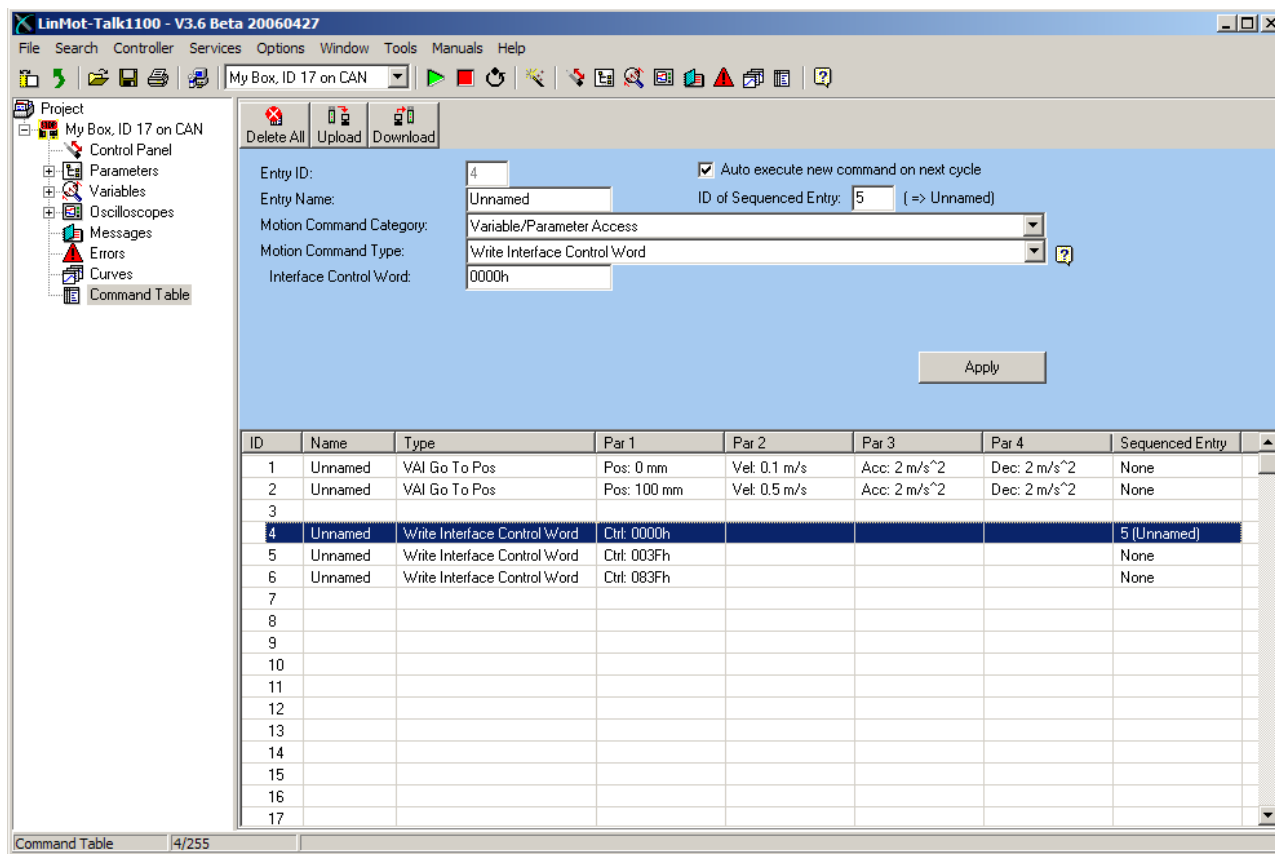


Figure 10: Command Table within LinMot-Talk

The CT entries can be accessed by the motion control firmware through corresponding motion commands or through digital IOs. The firmware uses the table data that is located in the RAM memory space of the drive. The CT can be stored permanently into the flash memory as well. At boot time the operating system copies the entire CT from the flash memory to the RAM.

If the CT entries are generated and downloaded using the LinMot-Talk software, they are always stored into RAM and flash memory (permanently saved).

It is also possible to download or modify CT entries in the drive over a fieldbus. Then it is necessary to have the CT entry data stored in the superior machine controller. There are three ways to bring the entry data to the LinMot drive:

1. The CT entries are created and downloaded to a drive by using the LinMot-Talk software. Afterwards the CT entry data can be uploaded from the drive over the fieldbus interface (using the CT service).
2. The CT entries are created and then exported to a raw data file (PVL file) using the LinMot-Talk software. This generated file can be loaded to the main controller.
3. The CT entry data is fully generated by the main machine controller without using the LinMot-Talk command table editor.

### 6.1 Command Table Entry Format

Each CT entry consists of one bit in a presence list (bit = 0 entry exists) and a command table entry data block of 64 bytes size. The CT service provides commands for reading/writing those blocks. For further details

how the CT services can be used for reading and writing CT entries over a fieldbus interface, please consult the corresponding interface manual.

Command Table Entry Presence List	
Byte Off	Description
00h..03h	Bit field for entries 1..31 (Bit = 0 entry exists)
04h..07h	Bit field for entries 32..63
08h..0Bh	Bit field for entries 64..95
0Ch..0Fh	Bit field for entries 96..127
10h..13h	Bit field for entries 128..159
14h..17h	Bit field for entries 160..191
18h..1Bh	Bit field for entries 192..223
1Ch..1Fh	Bit field for entries 224..255

**Table 9: Command Table Entry Saving Format**

Command Table Entry Data Block	
Byte Off	Description
00h..01h	Command entry Version ID fix A701h
02h..03h	Linked Command Entry ID (ID=FFFFh not linked)
04h..05h	Motion Command Header
06h..25h	Motion Command Parameters
26h..35h	Entry Name (0 terminated string with up to 16 characters)
36h..3Fh	Reserved for further use

**Table : Command Table Entry Data Block Format**

For reading a CT entry, the start reading entry with ID command returns the data block size in bytes (40h). After this command a read command can be repeated until the whole data block is read out.

For writing a CT entry, start with a command which defines the ID and the data block size, after this repeat writing the data with a command until the whole data is written. If this is done correctly the bit in the presence list will be cleared.

For modifying a single motion command parameter during runtime, a motion command exists, with ID, write offset and data as parameters.

## 7 Real Time IO Configuration Module

The Configuration Module module allows access to parameters, variables, curves, error log and command table. Also restart, start and stop of the drive is possible. Of course the Configuration Module module works independently from the MC Interface. For this reason changing a parameter and sending a motion command can be done in parallel.

Word	DO	DI
1.	Configuration Module Control	Configuration Module Status
2.	Argument (meaning depends on Cmd ID)	Argument (meaning depends on Cmd ID)
3.	Argument (meaning depends on Cmd ID)	Argument (meaning depends on Cmd ID)
4.	Argument (meaning depends on Cmd ID)	Argument (meaning depends on Cmd ID)

### 7.1 Configuration Module Control

Parameter Command ID to be executed								Reserved				Command Count			
15	14	13	12	11	10	9	8	7	6	5	4	3	2	1	0

The Configuration Module Control is split in two parts:

- Parameter Command ID to be executed (bits 8-15), see table Command ID
- Command Count (bits 0-3)

#### 7.1.1 Command Count

A new command is only evaluated, if the value of the command count changes. In the easiest way bit 0 could be toggled.

#### 7.1.2 Parameter Command ID

This selects the command.

Configuration Module Command ID List:

Command ID	Description
00h	No Operation
<b>Parameter Access</b>	
10h	Read ROM Value of Parameter by UPID
11h	Read RAM Value of Parameter by UPID
12h	Write ROM Value of Parameter by UPID, see limitations under <a href="#">Limited ROM and Flash Write Access</a> <sup>[9]</sup>
13h	Write RAM Value of Parameter by UPID
14h	Write RAM and ROM Value of Parameter by UPID, see limitations under <a href="#">Limited ROM and Flash Write Access</a> <sup>[9]</sup>
15h	Get minimal Value of Parameter by UPID
16h	Get maximal Value of Parameter by UPID
17h	Get default Value of Parameter by UPID
18h	Get maximal size of string Parameter by UPID (only available on SG6)
<b>Parameter (UPID) List</b>	
20h	Start Getting UPID List

21h	Get next UPID List item
22h	Start Getting Modified UPID List
23h	Get next Modified UPID List item
<b>Stop / Start / Default</b>	
30h	Restart drive (Recommended with Command Count = 0 !), see limitations under <a href="#">Limited ROM and Flash Write Access</a> <sup>9h</sup>
31h	Set parameter ROM values to default (OS SW), see limitations under <a href="#">Limited ROM and Flash Write Access</a> <sup>9h</sup>
32h	Set parameter ROM values to default (MC SW ), see limitations under <a href="#">Limited ROM and Flash Write Access</a> <sup>9h</sup>
33h	Set parameter ROM values to default (Interface SW), see limitations under <a href="#">Limited ROM and Flash Write Access</a> <sup>9h</sup>
34h	Set parameter ROM values to default (Application SW), see limitations under <a href="#">Limited ROM and Flash Write Access</a> <sup>9h</sup>
35h	Stop MC and Application Software (for Flash access)
36h	Start MC and Application Software
<b>Curve Service</b>	
40h	Save all Curves from RAM to Flash, see limitations under <a href="#">Limited ROM and Flash Write Access</a> <sup>9h</sup>
41h	Delete all Curves (RAM)
50h	Start Adding Curve (RAM)
51h	Add Curve Info Block (RAM)
52h	Add Curve Data (RAM)
53h	Start Modifying Curve (RAM)
54h	Modify Curve Info Block (RAM)
55h	Modify Curve Data (RAM)
60h	Start Getting Curve (RAM)
61h	Get Curve Info Block (RAM)
62h	Get Curve Data (RAM)
<b>Error Log</b>	
70h	Get Error Log Entry Counter
71h	Get Error Log Entry Error Code
72h	Get Error Log Entry Time low
73h	Get Error Log Entry Time high
74h	Get Error Code Text Stringlet
<b>Command Table</b>	
80h	Command Table: Save to Flash, see limitations under <a href="#">Limited ROM and Flash Write Access</a> <sup>9h</sup>
81h	Command Table: Delete All Entries (RAM)
82h	Command Table: Delete Entry
83h	Command Table: Write Entry
84h	Command Table: Write Entry Data

85h	Command Table: Get Entry
86h	Command Table: Get Entry Data
87h	Get Presence List of Entries 0..31 from RAM
88h	Get Presence List of Entries 32..63 from RAM
89h	Get Presence List of Entries 64..95 from RAM
8Ah	Get Presence List of Entries 96..127 from RAM
8Bh	Get Presence List of Entries 128..159 from RAM
8Ch	Get Presence List of Entries 160..191 from RAM
8Dh	Get Presence List of Entries 192..223 from RAM
8Eh	Get Presence List of Entries 224..255 from RAM

## 7.2 Configuration Module Status

Parameter Status								Reserved				Command Count Response			
15	14	13	12	11	10	9	8	7	6	5	4	3	2	1	0

The Configuration Module Status is split in two parts:

- Parameter Status (bits 8-15), see table Parameter Status
- Command Count Response (bits 0-3) Echo of Command Count of Control Word for Handshaking

### 7.2.1 Overview Configuration Module Return Status Values

Status Return Value	Description
00h	OK, done
02h	Command Running / Busy
04h	Block not finished (Curve Service/Command Table Service)
05h	Busy
C0h	UPID Error
C1h	Parameter Type Error
C2h	Range Error
C3h	Address Usage Error
C5h	Error: Command 21h "Get next UPID List item" was executed without prior execution of "Start Getting UPID List"
C6h	End of UPID List reached (no next UPID List item found)
D0h	State Error
D1h	Size Error
D4h	Entry ID error, e.g. curve/command table already defined / curve/command table not present
D7h	Error, MC Software is still running, should be stopped



### 7.2.1.1 Overview Parameter access

Word	DO	DI
1.	Configuration Module Control	Configuration Module Status
2.	Parameter UPID	Parameter UPID
3.	Parameter Value Low	Parameter Value Low
4.	Parameter Value High	Parameter Value High

### 7.2.1.2 Overview Curve access

Word	DO	DI
1.	Configuration Module Control	Configuration Module Status
2.	Curve Number	Curve Number
3.	Data Value Low / Info Block size	Data Value Low / Info Block size
4.	Data Value High / Data Block size	Data Value High / Data Block size

### 7.2.1.3 Start getting UPID List

Word	DO	DI
1.	Configuration Module Control	Configuration Module Status
2.	Start UPID (search from this UPID)	-
3.	-	-
4.	-	-

### 7.2.1.4 Get next UPID List item

Word	DO	DI
1.	Configuration Module Control	Configuration Module Status
2.	-	UPID found
3.	-	Address Usage
4.	-	-

Address Usage

			Not used for Hash calculation				Life Parameter						ROM Write	ROM Read	RAM Write	RAM Read
15	14	13	12	11	10	9	8	7	6	5	4	3	2	1	0	

**7.2.1.5 Start getting Modified UPID List (Command ID 22h)**

Word	DO	DI
1.	Configuration Module Control	Configuration Module Status
2.	Start UPID (search from this UPID)	-
3.	-	-
4.	-	-

**7.2.1.6 Get Next Modified UPID List Item (Command ID 23h)**

Word	DO	DI
1.	Configuration Module Control	Configuration Module Status
2.	-	UPID found
3.	-	Data Value Low
4.	-	Data Value High

**7.2.1.7 Get Error Log Entry Counter (Command ID 70h)**

Word	DO	DI
1.	Configuration Module Control	Configuration Module Status
2.	-	-
3.	-	Number of Logged Errors
4.	-	Number of Occurred Errors

**7.2.1.8 Get Error Log Entry Error Code (Command ID 71h)**

Word	DO	DI
1.	Configuration Module Control	Configuration Module Status
2.	Entry Number (0..24)	Entry Number
3.	-	Logged Error Code
4.	-	-

**7.2.1.9 Get Error Log Entry Time Low (Command ID 72h)**

Word	DO	DI
1.	Configuration Module Control	Configuration Module Status
2.	Entry Number (0..24)	Entry Number
3.	-	Entry Time Low Word
4.	-	Entry Time Mid Low Word

**7.2.1.10 Get Error Log Entry Time High (Command ID 73h)**

Word	DO	DI
1.	Configuration Module Control	Configuration Module Status
2.	Entry Number (0..24)	Entry Number

Word	DO	DI
3.	-	Entry Time Mid High Word
4.	-	Entry Time High Word

The Error Log Entry Time consists of 32Bit hours (Time High) and 32Bit ms (Time Low).

#### 7.2.1.11 Get Error Code Text Stringlet (Command ID 74h)

Word	DO	DI
1.	Configuration Module Control	Configuration Module Status
2.	Error Code	Error code
3.	Stringlet Number (0..7)	Stringlet Byte 0 and 1
4.	-	Stringlet Byte 2 and 3

#### 7.2.1.12 Command Table: Save To Flash (Command ID 80h)

Word	DO	DI
1.	Configuration Module Control	Configuration Module Status
2.	-	-
3.	-	-
4.	-	-

For this command, the MC software must be stopped (with command “35h: Stop MC and Application Software”). The Fieldbus Interface will stay active while the MC software is stopped.

See access limitations under [Limited ROM and Flash Write Access](#)<sup>[9]</sup>.

#### 7.2.1.13 Command Table: Delete All Entries (RAM) (Command ID 81h)

Word	DO	DI
1.	Configuration Module Control	Configuration Module Status
2.	-	-
3.	-	-
4.	-	-

#### 7.2.1.14 Command Table: Delete Entry (Command ID 82h)

Word	DO	DI
1.	Configuration Module Control	Configuration Module Status
2.	Entry Number	Entry Number
3.	-	-
4.	-	-

#### 7.2.1.15 Command Table: Write Entry (Command ID 83h)

Word	DO	DI
1.	Configuration Module Control	Configuration Module Status
2.	Entry Number	Entry Number

Word	DO	DI
3.	Block Size (even number of bytes)	Block Size
4.	-	-

**7.2.1.16 Command Table: Write Entry Data (Command ID 84h)**

Word	DO	DI
1.	Configuration Module Control	Configuration Module Status
2.	Entry Number	Entry Number
3.	Data	Data
4.	Data	Data

**7.2.1.17 Command Table: Get Entry (Command ID 85h)**

Word	DO	DI
1.	Configuration Module Control	Configuration Module Status
2.	Entry Number	Entry Number
3.	-	Block Size
4.	-	-

**7.2.1.18 Command Table: Get Entry Data (Command ID 86h)**

Word	DO	DI
1.	Configuration Module Control	Configuration Module Status
2.	Entry Number	Entry Number
3.	-	Data
4.	-	Data

**7.2.1.19 Command Table: Get Entry List (0..7) (Command IDs 87h .. 8Eh)**

Word	DO	DI
1.	Configuration Module Control	Configuration Module Status
2.	-	Offset in bytes
3.	-	Bit field (Bit set= undefined / Bit cleared = used)
4.	-	Bit field (Bit set= undefined / Bit cleared = used)

## 8 PVL Data Format

The parameter settings, curve profiles and command table of a LinMot drive can be exported together with other data (parameters, oscilloscope settings) as a configuration file (ending \*.lmc) with the LinMot-Talk software. The configuration file can then be imported to other drives again under usage of the LinMot-Talk software.

Some users of the LinMot drives want to store the parameter setup and/or curves in their main machine controller (PLC, IPC) as a simple value list. So they don't need any PC tools for configuration of drives when they produce series of the same machine type or when they have to replace a drive in the plant.

Beside the possibility of exporting configurations in LMC file format the LinMot-Talk software allows to save the setup into a simple text file. Data is stored in an easy interpretable **comma separated value format**. The file has the extension \*.pvl (Parameter Value List). A simple parser can convert the text file data into the customer specific data format.

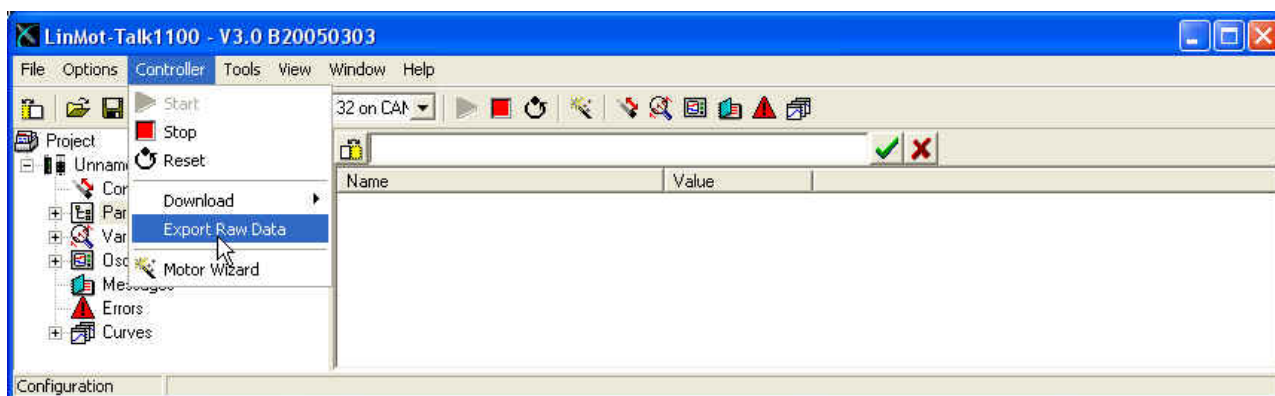


Figure 11: Export Raw Data

The LinMot-Talk software offers selective export of configuration data:

If 'All Parameters' is selected, all parameters are listed in the export file (hundreds of parameters, most of them are not used or set to their default value)

If 'Changed Parameters' is selected, the resulting file will be much smaller. Only parameters, which have been changed during the setup process (and therefore are relevant for the application), are listed in the file.

Only curves that are selected will be stored to the file.

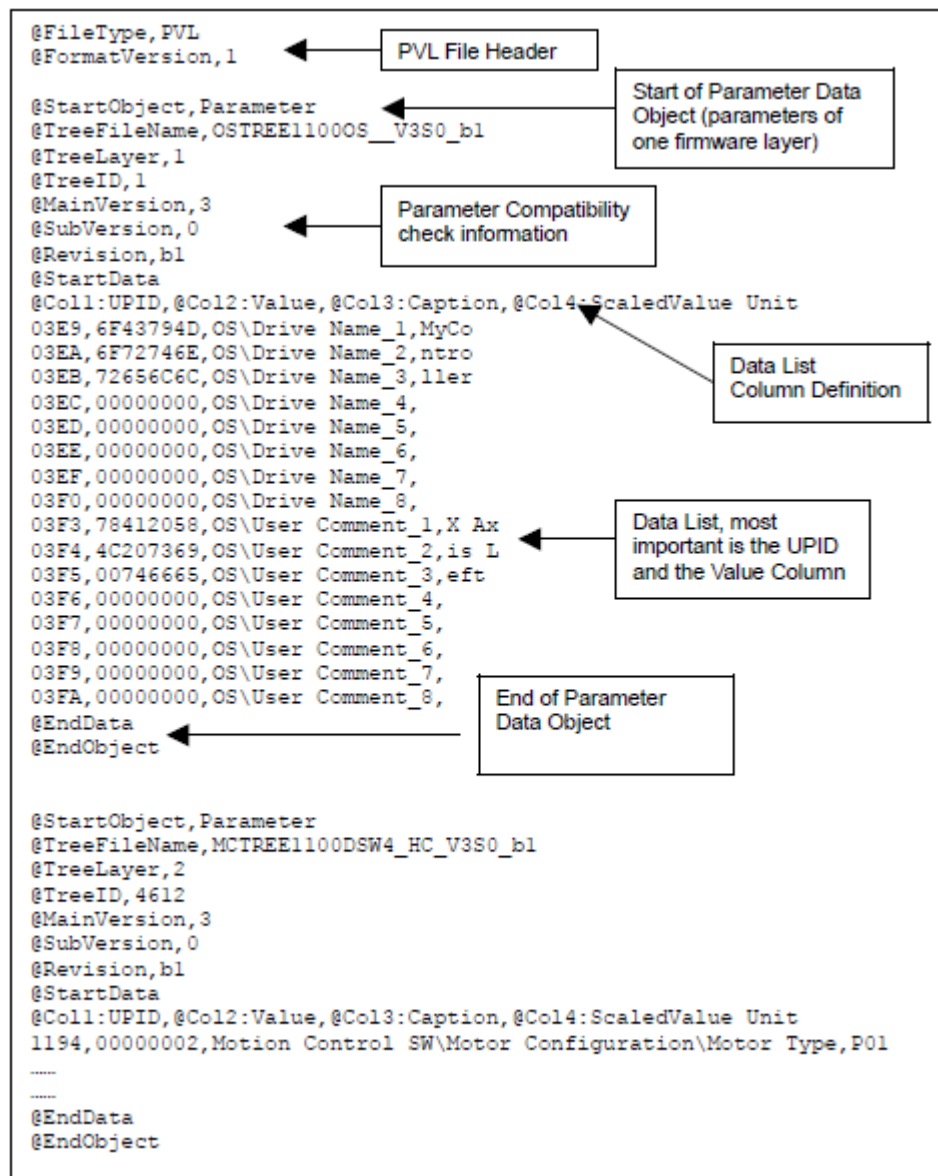


Figure 12: Example of a PVL data file with Parameter Data Objects

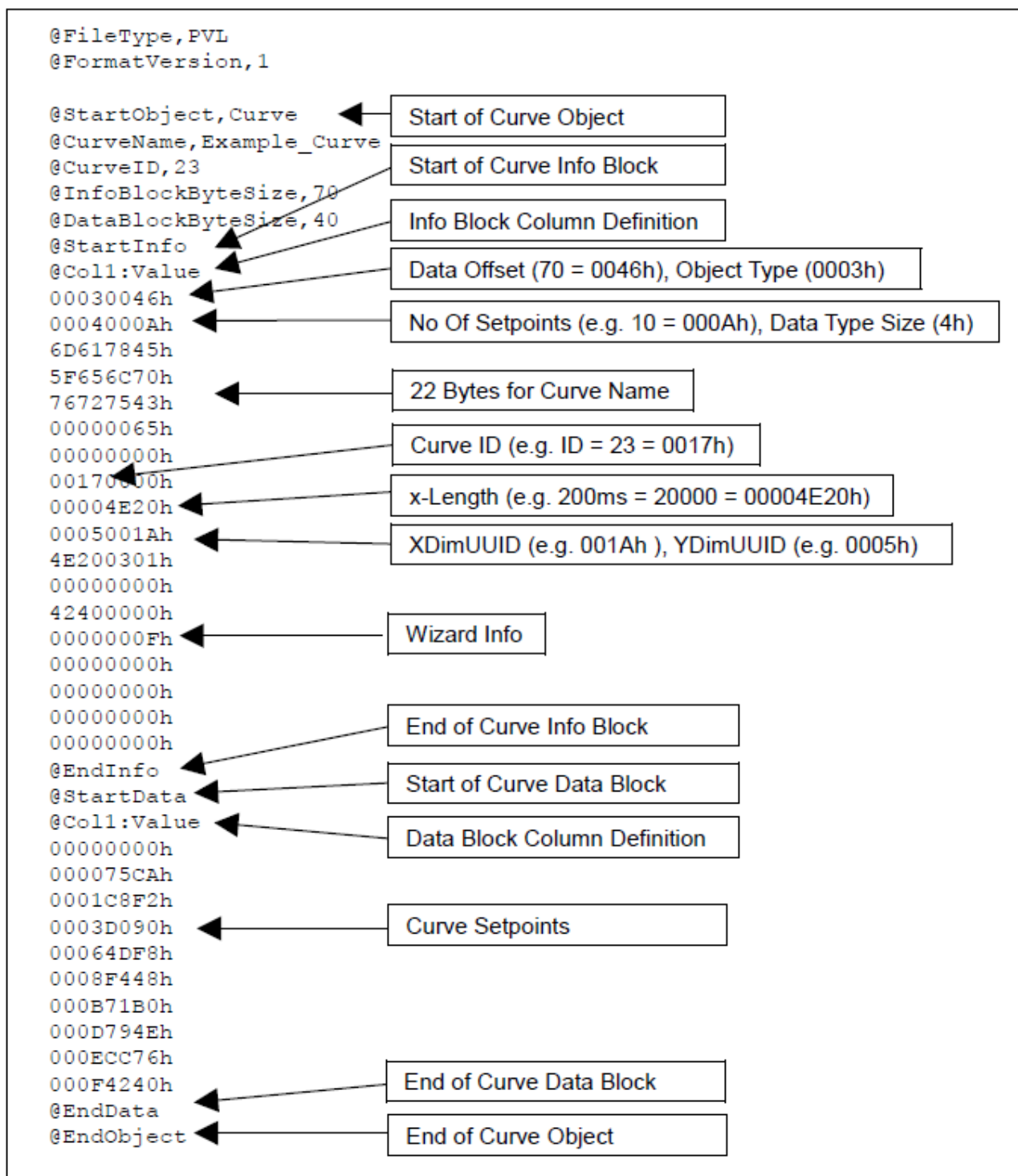


Figure 13: Example of a PVL data file with a Curve Object

## Contact & Support

### SWITZERLAND

#### NTI AG

Bodenaeckerstrasse 2  
CH-8957 Spreitenbach

Sales and Administration:

+41 56 419 91 91  
[office@linmot.com](mailto:office@linmot.com)

Tech. Support:

+41 56 544 71 00  
[support@linmot.com](mailto:support@linmot.com)  
<http://www.linmot.com/support>

Tech. Support (Skype):

support.linmot

Fax:

+41 56 419 91 92

Web:

<http://www.linmot.com>

---

### USA

#### LinMot USA Inc.

N1922 State Road 120, Unit 1  
Lake Geneva, WI 53147  
USA

Phone:

262-743-2555

E-Mail:

[usasales@linmot.com](mailto:usasales@linmot.com)

Web:

<http://www.linmot-usa.com/>

---

Please visit <http://www.linmot.com/contact> to find the distribution close to you.

Smart solutions are...

